

1. Technical Data Sheet

Summary	Slingshot Labs single biomarker CD4(+), CD4(-) are lyophilized cell mimics that feature CD4+ biomarkers with scatter properties similar to lymphocyte populations.
Application	<p>Slingshot Labs CD4(+), CD4(-) single biomarker control is intended to provide positive and negative signal detection of CD4 that are targeted by specific antibodies. It is an ideal process control for assays that have measured readouts using flow cytometry.</p> <p>For Research Use Only. Not for use in diagnostic or therapeutic procedures.</p>
Materials	This product is lyophilized for stability and ease of use. Each vial contains approximately 2.5×10^5 cell mimics.
Handling and Safety	No special handling or safety precautions are necessary. See Safety Data Sheet (SDS) at www.slingshotbio.com .
Storage	Store lyophilized products at -20°C upon receipt. Use immediately upon reconstitution.
Expiration	One year from the date of manufacturing.
Instructions for Use	<ol style="list-style-type: none"> 1. Tap down the vial to ensure that all cell mimics are collected at the bottom of the vial. 2. Add 250 µL of water (see note below) to the vial and transfer the contents to desired container for staining. Add 1mL of water to the glass vial and transfer residual beads to the same staining container. <p>Note: Using 1% BSA in water will improve yield during reconstitution, and plain water will improve yield over 1x PBS. MilliQ grade water or higher is preferred for purity, but DI water can be used as well.</p> <ol style="list-style-type: none"> 3. Centrifuge at 500 x g for 5 minutes or 16000 x g for 30 seconds and remove the supernatant without disturbing the cell pellet. Resuspend the pellet in desired staining buffer. 4. Add an appropriate amount of your staining antibody and mix well by vortexing. <p>Note: It is recommended to determine the titer of the antibody that works best for your application.</p>

5. Incubate at RT in the dark for 10-15 min.

6. Wash by adding 2 mL of staining buffer. Mix well, then centrifuge at 500 x g for 5 minutes or 16000 x g for 30 seconds. Remove the supernatant without disturbing the pellet.

Note: FACS tubes provide optimal washing due to higher volume capacity.

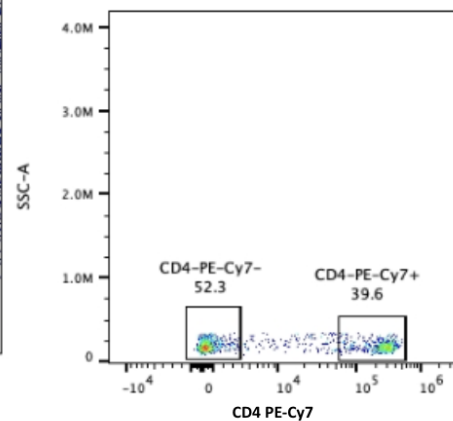
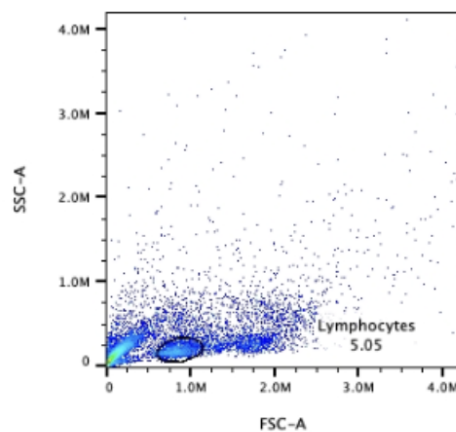
7. Repeat the previous wash step once more. Add desired volume of running buffer to the tube/well after the final wash.

Note: For best results, a total of two washes are recommended.

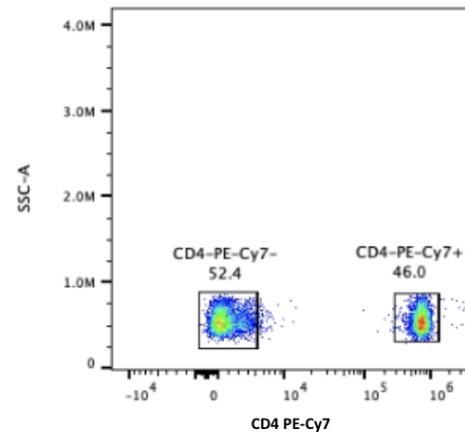
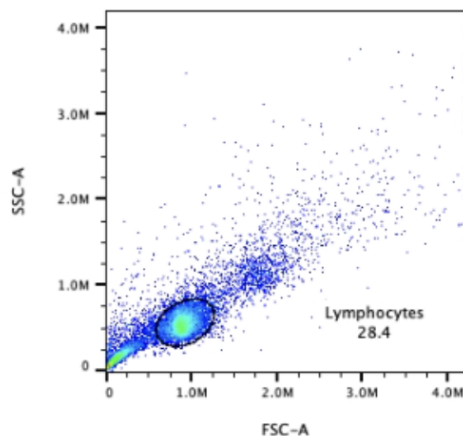
8. Acquire using the same FSC and SSC settings as leukocytes.

QC Data

PBMCs



Slingshot CD4+, CD4- Single Biomarker Control



Technical Support	For technical support regarding this product please contact: support@slingshotbio.com