

1. Technical Data Sheet

Summary	FlowCytes® fixed cell mimic white blood cells (WBC) are shelf stable cell mimics that mimic the optical properties of fixed human blood populations for lymphocytes, monocytes, and granulocytes. There is no sample preparation needed, unlike traditional biological controls.
Application	FlowCytes® fixed cell mimic WBC are intended as forward and side scatter controls for the identification and analysis of fixed whole blood populations and other cell types. This product can be used to calibrate and evaluate flow cytometry instrumentation or as a control in an assay to standardize gating. For Research Use Only. Not for use in diagnostic or therapeutic procedures.
Materials	FlowCytes® are cell mimics that are suspended in aqueous solution and are packaged in a convenient dropper bottle. Each bottle contains approximately 2.5x10 ⁶ particles in ~1.2mL.
Handling and Safety	FlowCytes® fixed cell mimic WBC contains no biological material, so it is safe to use in any environment and requires no special disposal. See SDS at www.slingshotbio.com .
Instructions for Use	<ol style="list-style-type: none"> 1. Vortex the bottle on high for 2-3 seconds to resuspend FlowCytes. 2. Add 1 drop of FlowCytes to a tube or well that contains 100 µL of PBS or sheath fluid. 3. Vortex mixture on high for 2-3 seconds, or pipette up and down to mix thoroughly. 4. View and acquire FlowCytes on FSC-A and SSC-A using the same instrument settings as real whole blood cells. 5. For best results, set the flow rate on the cytometer to low.
Storage	FlowCytes® can be stored between 2-30°C.
Expiration	42 months from the date of manufacturing.
QC Data	

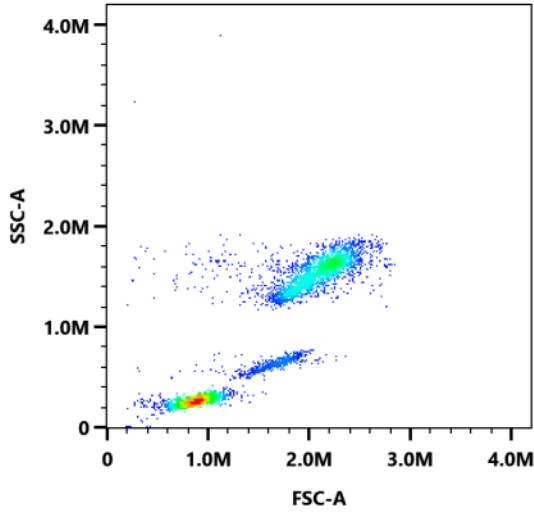


Figure 1. Scatter plot of FlowCytex® fixed cell mimic

Technical Support

For technical support regarding this product please contact: support@slingshotbio.com