

# 1. Technical Data Sheet

|                             |   |
|-----------------------------|---|
| <b>Summary</b>              | FlowCytes® WBC (Unfixed) 25 Tests are shelf stable cell mimics that mimic the optical properties of non-fixed human blood populations for lymphocytes, monocytes, and granulocytes. There is no sample preparation needed, unlike traditional biological controls.  |
| <b>Application</b>          | FlowCytes® WBC (Unfixed) 25 Tests are intended as forward and side scatter controls for the identification and analysis of non-fixed whole blood populations and other cell types. This product can be used to calibrate and evaluate flow cytometry instrumentation.<br><b>For Research Use Only. Not for use in diagnostic or therapeutic procedures.</b>   |
| <b>Materials</b>            | FlowCytes® WBC (Unfixed) 25 Tests are cell mimics that are suspended in aqueous solution and are packaged in a convenient dropper bottle. Each bottle contains approximately $2.5 \times 10^6$ particles/mL.  |
| <b>Handling and Safety</b>  | FlowCytes® WBC (Unfixed) 25 Tests contain no biological material, so it is safe to use in any environment and requires no special disposal. See SDS at <a href="http://www.slingshotbio.com">www.slingshotbio.com</a> .   |
| <b>Instructions for Use</b> | <ol style="list-style-type: none"> <li>1. Vortex bottle on high for 2-3 seconds to resuspend FlowCytes®</li> <li>2. Add 1 drop to 100 µL of PBS or sheath fluid</li> <li>3. Vortex mixture on high for 2 seconds to mix thoroughly</li> <li>4. View and acquire FlowCytes® in FSC-A and SSC-A using the same instrument settings as real whole blood cells</li> <li>5. For best results, set the flow rate on the cytometer to low</li> </ol> |
| <b>Storage</b>              | FlowCytes® WBC (Unfixed) 25 Tests can be stored at 2 -8 °C  |
| <b>Expiration</b>           | 24 months from the date of manufacturing.   |
| <b>QC Data</b>              |   |

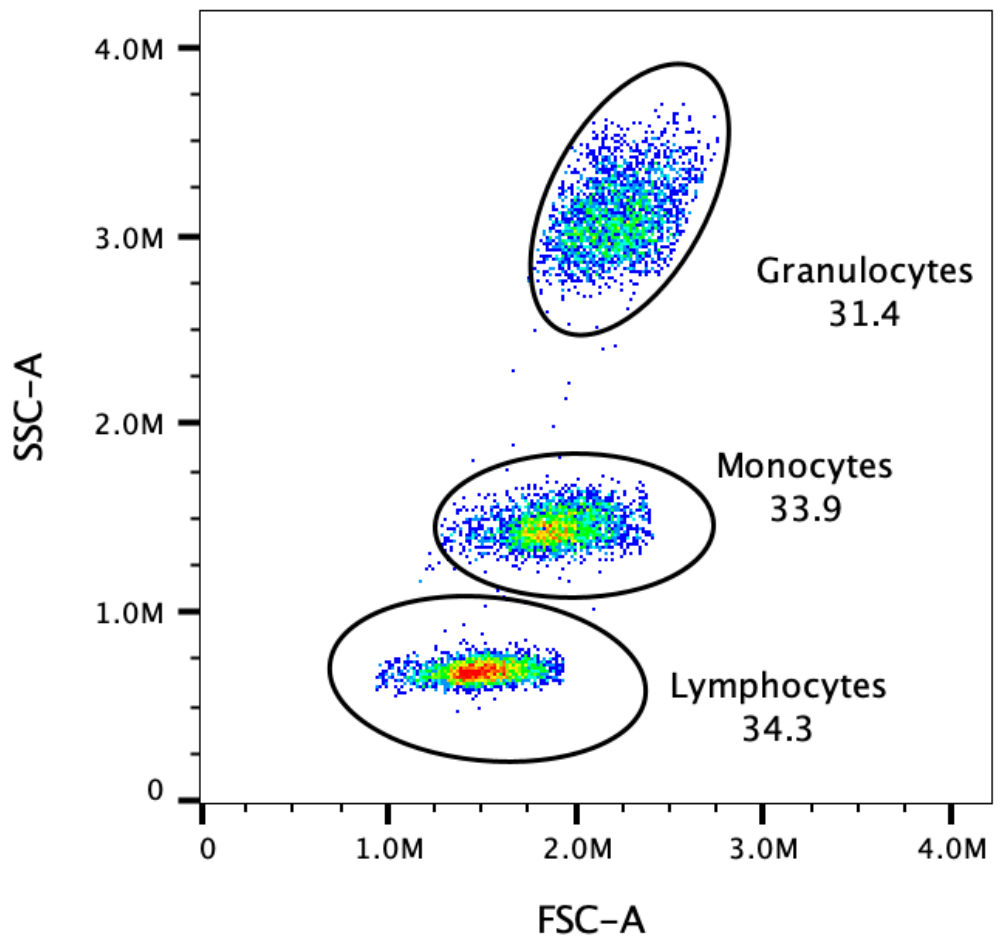


Figure 1. Scatter plot of FlowCytes® WBC (Unfixed) 25 Tests

**Technical Support**

For technical support regarding this product please contact: [support@slingshotbio.com](mailto:support@slingshotbio.com)